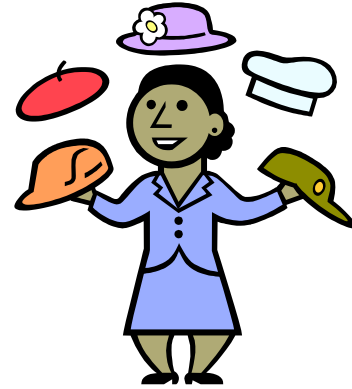




The American  
**Real Estate** and  
**Urban Economics**  
Association



This January we'd like to introduce a new opportunity to meet colleagues and exchange ideas at the Annual AREUEA Conference

Please Join the Women's Real Estate Network

At its  
**Inaugural Breakfast**

**Friday, January 6<sup>th</sup>, 7:00 – 8:00 a.m.**  
**Daniel Webster Room, Westin Copley Place**

(we know its really early, but we promise it will be worth it!!!)

We'll have a nice light breakfast and take some time to get to know each other. Also, Susan Wachter, Professor of Real Estate at the Wharton School, will share her thoughts on the status of women in the academic real estate profession.

There is no charge for the breakfast but we need to know how many to expect so please RSVP to Cinda Smith at [cinda@areuea.org](mailto:cinda@areuea.org). Also, please contact Cinda or either one of us if you have questions or comments.

Looking forward to seeing you in Boston!

Amy Crews Cutts ((703) 903-2321 [amy\\_crews\\_cutts@freddiemac.com](mailto:amy_crews_cutts@freddiemac.com) )

Andrea Heuson((305) 284-1866 [aheuson@miami.edu](mailto:aheuson@miami.edu))

Cinda Smith ((866) 273-8321 [cinda@areuea.org](mailto:cinda@areuea.org))